

Precautions

Precautions for Fastening the Weight on RMX VD and VD59 Clubs

If the weight is not tightened in a proper position, the screw could loosen, potentially causing the weight position to shift or other problems. Pay particular attention to the following points.

CORRECT

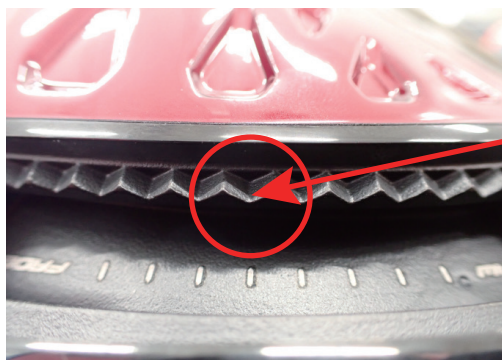


Position the weight so it is flush with the head sole surface before tightening the screw.

INCORRECT



Do not tighten the screw if the weight is protruding from the head's sole surface.



There is a bump on the back side of the weight.

Position the weight so the bump on the weight **clicks into a notch** on the head rail.



Adjust the weight with the sole surface oriented upward. The weight becomes movable after loosening the screw about **two revolutions**. However, the screw will come out if loosened too far.



When moving the weight, make sure it fully **clicks into a notch**.

* If the screw is accidentally removed, contact the dealer where the club was purchased.

* If the screw does not move in or rotate smoothly when tightening, stop turning the screw and contact the dealer where the club was purchased.